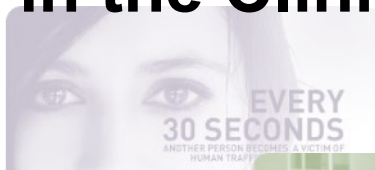


Human Trafficking Awareness And Reporting in the Clinical Setting

Presented by:

Debbie Ellinger

**Founder of Elli's House 313
Human Trafficking Advocate**



After attending this *complimentary* education session you will be able to: **Participants will learn what human trafficking is and the warning signs a victim may exhibit. They will also learn how to properly interview a human trafficking victim and report their findings.**

Learning Objectives:

1. Increase awareness in identifying the signs of human trafficking.
2. Improved interview and communication techniques with a victim.
3. Help eliminate stereotypes and judgments that accompany a victim of human trafficking.
4. Improve reporting techniques.

R 338.2929. Rule 29 • ALL social workers and Nurses seeking licensure shall complete training in identifying victims of human trafficking. The training does not need to be continuing education. • Training needs to be completed prior to the license renewal. • This is a one-time only training requirement. Adair Consulting & Events, llc is an approved provider with the Michigan Social Work Continuing Education Collaborative. Approved provider number: MICEC 111417. This program will award 1.5 CE Credit Hour. Adair Consulting & Events, LLC is an approved provider with the Michigan Nurse Association. This program will award 1.5 CE Credit Hour for nurses. This continuing nursing education activity was approved by the Michigan Nurses Association —1.5 credit - MNA#17-032-ED1 . For continuing education questions or grievances, please contact Adair Consulting & Events, llc at 586-648-6564 or admin@cehealthlink.com. If special accommodations are required please contact: (248) 656-6300. **To cancel your reservation, please e-mail admin@cehealthlink.com or call 586-648-6564.**

Sponsored by:



Windemere Park of Oakland
Licensed Assisted Living and Memory Care

Location:

Bellbrook



**873 W Avon Rd
Rochester Hills, MI 48307**

Traffic will be congested on Avon Road coming West. Also, you can enter off of Livernois and take Drexelgate Parkway to Wexford Way. You can park near the South Entrance (marked) or you can use the lower level entrance. Room location from South Entrance: Go right at the elevator and it is on the right hand side across from the dining room— Room location Main Entrance: Go up the stairs, left through the double doors and it is the second door on the left

**Complimentary
Presentation**

Tuesday, February 13, 2018

Agenda

5:00 p.m. - 5:45 p.m.

**Registration,
Dinner and Tours.**

5:45 p.m. -

**Sponsor presentation
6:00 p.m. - 7:30 p.m. -
Presentation**

This presentation is complimentary and seating is limited! This presentation limited to Social Workers and Nurses only. Please contact (248) 656-6300 if you need special accommodations. Please RSVP by registering online at cehealthlink.com by February 11, 2018. For cancellations please e-mail admin@cehealthlink.com or call 586-648-6564.

